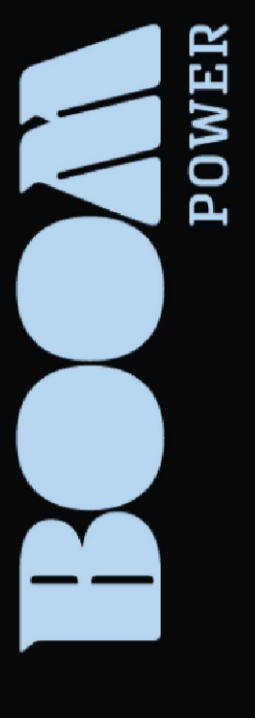
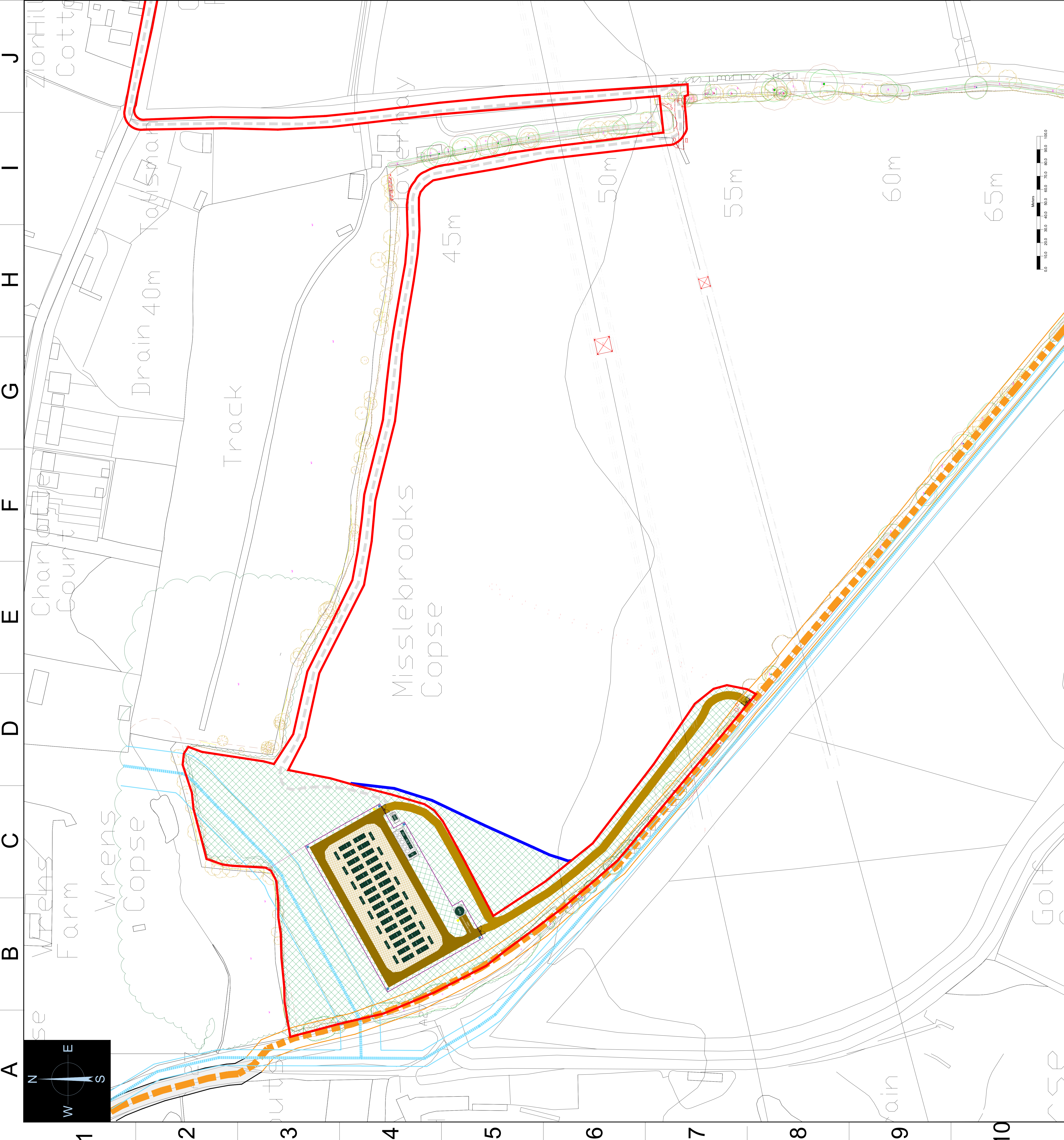


MISSLEBROOKS BATTERY STORAGE OVERALL LAYOUT

- Red Line Site Boundary
- Blue Line Site Boundary
- Pallsade Fencing
- Wildflower Fencing
- Export Cable Route
- Gas Pipe with Buffer
- Water Pipe with Buffer
- Overhead Electrical Line
- Impermeable Internal Track
- Impermeable Surfacing
- Permeable Access Track
- Soft Landscaping
(See Landscape Masterplan)
- Gravel Base
- Access Gate
- CCTV
- Fire Hydrant
- Power Conversion System
- Local Supply Transformer
- Battery Storage Unit
- High-Voltage Substation
- Customer Substation
- 33kV DNO Substation
- Storage Container
- Water Supply Tank

Boom Power Ltd. Address		Project Address	
Boom Power Ltd. Unit 5E Park Farm Chichester Road Arundel West Sussex BN18 0AG		Land Between: Botley Road A27, Castle Lane & Misslebrooks Lane. SO52 9LY	
Drawing Information			
V No	Revision Note	By	Date
2.6	Original	JT	14/08/2023
2.7	BESS Safety Revisions	SS	02/11/2023
2.8	FINAL	SS	03/11/2023
2.8.1	Revised Key	SS	03/11/2023
2.8.2	Amended	SS	09/11/2023
Drawing Information			
Scale	1:1000 @ A0		
Stage	FINAL		
Drawing Name	Battery Storage Overall Layout		
Drawing Number	B201		
Designed By	Sam Smith		
Sheet 1 of 1			



BUILD | OWN | OPERATE | MAINTAIN
BOOM-POWER.CO.UK

TEL: +44 (0) 1903 323230

THIS DRAWING REMAINS THE PROPERTY OF BOOM POWER LTD. AND MUST BE RETURNED FORTHWITH UPON REQUEST.